

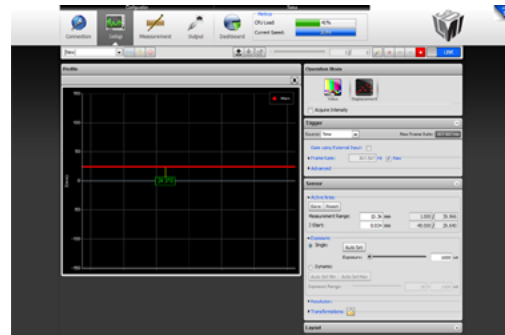


Gocator® 1100 SERIES

ALL-IN-ONE 3D SMART DISPLACEMENT SENSORS

- PRE-CALIBRATED AND READY TO MEASURE
- SCALABLE TO A SYNCHRONIZED MULTIPLE SENSOR NETWORK
- SETUP & CONTROL VIA WEB BROWSER
- RICH I/O & PLC SUPPORT
- OPEN SOURCE SDK

The Gocator 1100 series of smart laser displacement sensors are the next generation of distance measuring devices. Gocator is built upon the success of the Selcom SLS and Optocator products. Ideal for non-contact measurement, Gocators are simple to network and integrate. These sensors are ruggedly designed to handle industrial environments and are ready to deliver results in your most demanding on-line inspection applications, right out of the box.



Gocator 1100



- **BUILT ON SELCOM & OPTOCATOR SUCCESS:** Leverages the latest digital technologies to deliver higher flexibility and performance. Easily integrates into existing systems and delivers ranges over Ethernet, analog, serial, or Selcom Interface.
- **HIGH SPEED AND ACCURATE:** Samples at a 10kHz scan rate at high resolution over a large measurement range (up to 2000 mm). Ideal for dimensional measurements, such as width, height, and thickness.
- **EASE TO USE:** Gocator's built-in web server allows for flexible configuration of profile settings using a web browser. With no additional software to install, Gocator's out of the box setup and configuration is fast and easy.
- **STANDALONE & SCALABLE:** Designed to be truly standalone, single sensor systems do not require any additional controllers, or PCs. Gocator systems can effortlessly scale to multiple sensors using LMI Master hubs. Masters take care of power distribution, laser safety interlock, I/O handling, and microsecond synchronization.
- **COMPACT & LIGHT WEIGHT:** Gocator's small footprint make it ideal for fitting into tight spaces and mounting onto robotic arms. Available in two housing package options for best fit into any application.

Gocator 1120 Standard Package - Side Mount

DATASHEET_Gocator_1100-Series_B1.6



Gocator 1100 SERIES

Model	1120	1125	1150	1160	1165	1170	1190
Scan Rate (Hz)	10,000	10,000	10,000	10,000	10,000	10,000	10,000
Clearance Distance (mm)	40	182	200	238	562	250	500
Measurement Range (mm)	20	35	200	325	375	400	2000
Linearity Z (+/- % of MR)	0.05	0.05	0.05	0.05	0.05	0.05	0.10
Linearity Z (+/- mm)	0.010	0.018	0.1	0.163	0.19	0.20	2.0
Resolution Z (mm)	0.0005	0.00088	0.005	0.008	0.0094	0.01	0.3
Spot Size (mm)	0.07	0.25	0.3	0.5	0.7	0.6	3.00
Standard Laser Class	2M	2M	2M	2M	3R	3R	3B
Available Laser Class*	3R, 3B	3R, 3B	3R, 3B	3R, 3B	2M, 3B	2M, 3B	N/A
Standard Package Dimensions (mm)	Side Mount 30x120x149	Side Mount 30x120x149	Side Mount 30x120x149	Side Mount 30x120x149	Side Mount 30x120x220	Side Mount 30x120x149	Side Mount 30x120x277
Optional Package** Dimensions (mm)	Top Mount 49x75x162	Top Mount 49x75x162	Top Mount 49x75x162	Top Mount 49x75x162	Top Mount 49x75x232	Top Mount 49x75x162	Top Mount 49x75x289
Weight (kg)	0.8	0.8	0.8	0.8	1.1	0.8	1.4

Specifications are preliminary, final specifications may vary. Resolution Z based on 128 samples averaging.

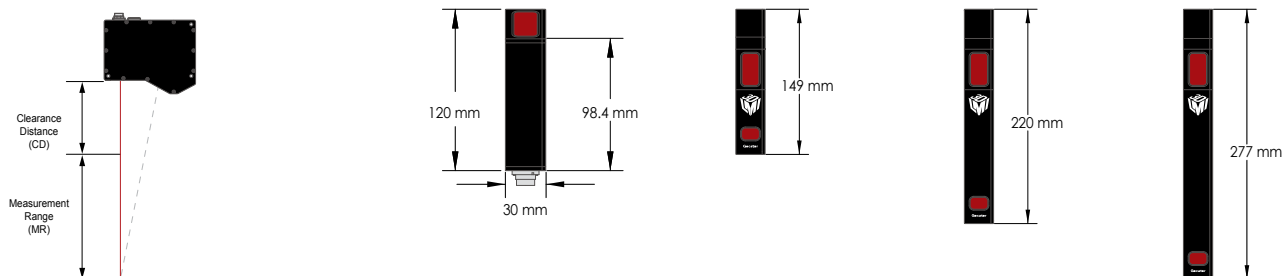
*Pricing will vary. **Lead times will vary.

All 1100 Series Models

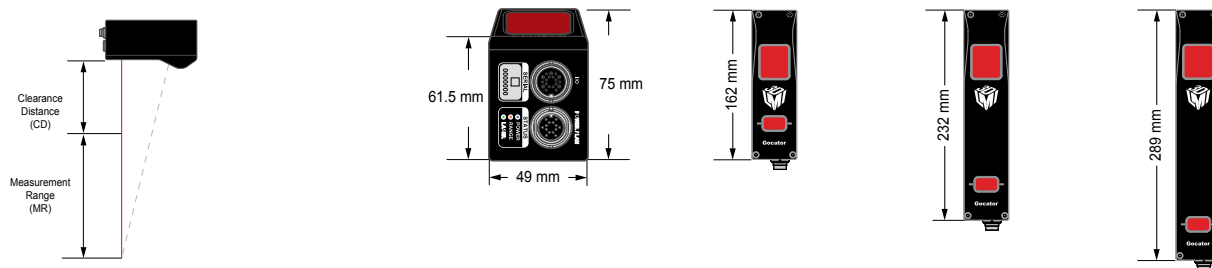
Interface	Gigabit Ethernet
Inputs	Differential Encoder, Laser Safety Enable, Trigger
Outputs	2x Digital Output, RS-485 Serial, Selcom Serial, 1x Analog Output (4-20mA)
Input Voltage (Power)	+24 to +48 VDC (10 Watts); Ripple +/- 10%
Housing	Gasketed Aluminium Enclosure, IP67
Operating Temp	0 to 50 °C
Storage Temp	-30 to 70 °C

NOTE: Specifications stated are based on preliminary data, final specifications may vary.

Standard Package - Side Mount



Optional Package - Top Mount



Contact LMI Technologies or an authorized Gocator distributor for more information on how Gocator can provide you with a complete, easy to use, inline measurement and control solution. www.lmi3d.com

©2013 LMI Technologies Inc. All rights reserved. Information contained in this brochure is subject to change without notice.

